

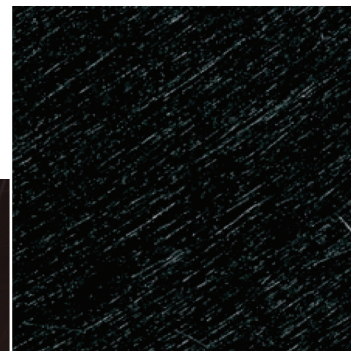
Rockfon® Cinema Black™

Features & Benefits

- Smooth black stone wool panels with great sound absorption performance (NRC = 0.85 - 0.95)
- Class A Fire Performance
- Ideal as an infill panel for various metal ceilings systems to enhance overall acoustical performance of the system
- Inherently mold and mildew resistant with no added antimicrobials
- Lightweight panel, easy to carry and install
- Combine with Chicago Metallic® 1200 15/16" system or 9/16" Tempra, along with perimeter trims, for a complete system look
- Compliant with the Build America, Buy America Act (BABAA)

Applications

- Cinema
- Auditorium
- Theater
- Sound Studio



High Acoustic Absorption



Class A Fire Performance



Moisture and Sag Resistance



Smooth, Modern Aesthetics



Mold and Mildew Resistance



30-year Warranty Applies to All Stone Tiles and Panels



Rockfon® Cinema Black™

LEED® v4.1 Highlights

Materials and Resources (MR)

- Waste Management Planning ✓
- Interiors Life Cycle Impact Reduction ✓
- Environmental Product Declarations ✓
- Sourcing of Raw Materials ✓
- Material Ingredients ✓
- Waste Management -

Indoor Environmental Quality (EQ)

- Low-Emitting Materials ✓
- Interior Lighting ✓
- Acoustic Performance ✓

Recycled Content: 52%*



High Performance Factors

Base Material Stone Wool

Surface Smooth

Fire Class A

Performance Tested to US Standard ASTM E84: Flame Spread Index: 5
Smoke Developed Index: 0
Canadian Standard CAN/ULC S102: Flame Spread Index: 15
Smoke Developed Index: 5

Mold & Mildew Resistance Inherently Resistant
(applies to stone wool substrate and tile surfaces)
Tested to ASTM D3273: 10
(Scale of 0 to 10, 10 being highest performing)
Tested to ASTM C1338: Pass
(Pass or Fail, Stone Wool Tiles Pass)

Sag Resistance Won't Sag or Warp Even in 100% Relative Humidity
Tested to ASTM C367

Low VOC UL GREENGUARD Gold Certified

Warranty 30-Year Tile Warranty



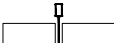

Standard Panels

Edge Designation	Item Number	Modular Size (nominal)	NRC	Fire Class	Mold & Mildew Resistance	Sag Resistance (relative humidity)	Light Reflectance	Embodied Carbon		Low VOC	Packaging Information	
								Per 1m ² (kg CO ₂ - eq)	Per 1ft ² (kg CO ₂ - eq)		lbs/sqft	sqft/carton
 SQ Square Lay-in	1200	2' x 2' x 5/8"	0.85	A	✓	up to 100%	0.04	2.43	0.226	✓	0.38	112
	1201	2' x 4' x 5/8"	0.85	A	✓	up to 100%	0.04	2.43	0.226	✓	0.38	112
	1210	2' x 2' x 1"	0.95	A	✓	up to 100%	0.04	3.49	0.324	✓	0.45	64
	1211	2' x 4' x 1"	0.95	A	✓	up to 100%	0.04	3.49	0.324	✓	0.45	64

Under certain lighting conditions color and gloss variations may occur.




*Recycled content values for our stone wool tiles and panels are based on 2021 production averages of a standard 2'x2' tile, and based on their primary production location.

Product Compatibility

15/16" Suspension Systems	9/16" Suspension Systems
200, 1200 and Fire Rated systems	4000 and Fire Rated systems
 SQ Square Lay-in	SQ - Square Lay-in (2' x 2' x 5/8" & 2' x 4' x 5/8" only)  4000 - Tempra

Rockfon® Cinema Black™

Accessories

	Detail	Rockfon Part Number	Product Number	Product Description	Packaging	
					Pcs/ Ctn	Lbs/ Ctn
General Clips*		250348	935.00	Universal Hold Down Clip	1000	16
		252923	425.01	Hold Down Clip for 5/8" Board 250/1250 Systems	200	2
		250343	820.00	Hold Down Clip for 5/8" Board 250/1250 Systems	1000	7
		237949	490.00	Hold Down Clip for 0" - 3/4" Panels (Black)	100	2
		237952	491.00	Hold Down Clip for 3/4" - 1-1/4" Panels (Blue)	150	2
		237954	492.00	Hold Down Clip for 1-1/2" Panels (Grey)	100	2
		250324	426.01	Butterfly Retention Clip for 0" - 1" Panels	200	15
250325		427.01	Butterfly Retention Clip for 1" - 2" Panels	150	15	

*Clips should be chosen as per tile thickness

[Scan for Full
Accessories Guide](#)



Rockfon® Cinema Black™ Properties

Material

Stone wool (Mineral Wool) ceiling tiles with pre-painted glass scrim.



ASTM E1264 Classification

ASTM E1264 (2022): Type IV, Form 3, Pattern G
ASTM E1264 (2023): Type A, Form A2.3, Pattern G



Fire Performance

Stone wool ceiling tiles achieve Class A fire requirements and are tested for Surface Burning Characteristics to ASTM E84 for the US and CAN/ULC S102 for Canada.

Rockfon® Cinema Black™ Surface burning characteristics:
UL723 (ASTM E84): Flame Spread Index: 5
Smoke Developed Index: 0
CAN/ULC S102: Flame Spread Index: 15
Smoke Developed Index: 5



Mold and Mildew Resistance

Rockfon® Cinema Black™ stone wool substrate and tile surfaces are inherently resistant to mold and mildew and are tested to ASTM D3273 (Standard Test Method for Resistance to Growth of Mold on the Surface of Interior Coatings) and ASTM C1338 (Standard Test Method for Determining Fungi Growth Resistance of Insulation Materials and Facings).



Humidity Resistance

Stone wool ceiling tiles are inherently resistant and are tested to ASTM C367 (Standard Test Methods for Strength Properties of Prefabricated Architectural Acoustical Tile or Lay-In Ceiling Panels) and won't sag or warp even in 100% relative humidity.



Cleaning

✓ Vacuum



Sustainability

Rockfon® Cinema Black™ ceiling tiles are UL GREENGUARD Gold certified for low VOC (chemical) emissions and meet the California Department of Public Health (CDPH) Standard Method v1.2-2017 for offices and classroom environments.

Selected potential applications: LEED, WELL, CHPS, Green Globes, BREEAM Int. and CALGreen

- ✓ UL GREENGUARD Gold
- ✓ Environmental Product Declaration



Environment

52% recycled content. Recycled content based on U.S. manufacturing.



Embodied Carbon

Global Warming Potential (GWP) kg of CO₂-eq (per functional unit) from stages A1 - A3 for SQ Edge: 2.43 kg CO₂-eq (per 1m²)* / 0.226 kg CO₂-eq (per 1f²)*
**For all other edge types, refer to p. 2*



Thermal Resistance

R 2.17 hr.ft².°F/Btu per 5/8 inch (I-P)
R 0.38 m².K/W per 15.9 mm (SI)



Tile Directionality

Rockfon® Cinema Black™ tiles are directional and must be installed according to backside arrow direction. The arrow can be turned 180°, not 90°.



Warranty

30-Year Limited Product Warranty
See rockfon.com

Find us on

MasterSpec®

Powered by Deltek Specpoint®

BIM/Revit objects available at:
rockfon.com/products/rockfon-cinema-black/



Visit rockfon.com to learn more about Rockcycle.



GREENGUARD Gold Certified
for Office and Educational
Environments



CERTIFIED Environmental
Product Declaration

110424

Rockfon

4849 S. Austin Ave.
Chicago, IL 60638 USA

2024 | Subject to alterations in range and product technology without prior notice. Rockfon accepts no responsibility for printing errors.

© ROCKWOOL 2022. All rights reserved.

® denotes a trademark that is registered in the United States of America.

Tel. +1-800-323-7164

cs@rockfon.com

rockfon.com